

Da Vinci Xi

Define a new
standard.



INTUITIVE



Define a new standard

Designed to provide flexibility for procedures performed across your robotics program, the da Vinci Xi surgical system offers broader anatomical access, enhanced ease of use, and complete integration of the most advanced da Vinci technology.¹

This fourth-generation system includes the same advanced 3DHD vision and wristed instruments you expect of da Vinci, in a modular, adaptable format.

With a surgical system this versatile, a new standard in minimally invasive care is possible.

Transform your approach

The da Vinci Xi features boom-mounted arms with multi-position set up joints designed to help maximize the surgical workspace externally and internally. From a single cart location, staff has greater arm positioning capabilities¹, and surgeons can operate more easily across multiple quadrants¹ with the freedom to complete a wide range of minimally invasive procedures.



Pick your placement

Thinner arms and longer instruments enable simpler port placement from case to case.¹



Reach different angles

With Integrated Table Motion, you can reposition the patient without stopping the case to optimize access, exposure, and reach.¹

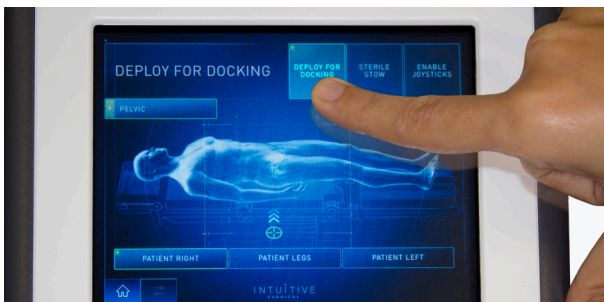


Get a different perspective

The small scope can be placed on any of the four arms during a procedure, giving you increased flexibility for visualizing the surgical site.¹

Operate with efficiency¹

Intuitive has spent thousands of hours over several decades working with surgical care teams to help streamline robotic-assisted surgery, which is why the da Vinci Xi surgical system features help to get you started quickly and streamline essential tasks.



Start simply

A unique Guided Set Up has a user interface that is clear and easy to learn, with both visual and audible cues to facilitate quick boom deployment and precise setup.



Zero in on the right approach

Drive the patient-side cart toward the surgical table using the laser cross hairs to expedite connection to the ports.



Align the arms with little effort

Insert the endoscope so that the target anatomy is in view, then simply hold the targeting button as the remaining arms move into position automatically.



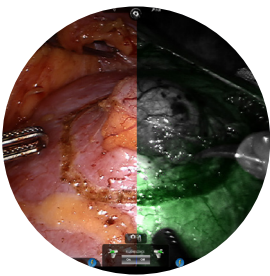
Put the power in your hands

The integrated ERBE VIO dV generator helps you fine-tune energy output and switch presets directly from the surgeon console.



Access the latest da Vinci innovations

Choosing the da Vinci Xi surgical system means you can use the same instruments available for the da Vinci X, enabling you to standardize instruments for your multi-port patient carts.



See tissue in a different light

Firefly fluorescence imaging is built in to give you real-time visualization and assessment of vessels, bile ducts, and tissue perfusion.



Staple with control

Da Vinci Stapling offers a full range of lengths and reloads—30, 45, and 60 mm—as well as fully wristed articulation, complete surgeon control from the console, and software-driven feedback to help reduce guesswork.



Switch tasks quickly

With the ability to seal, cut, grasp, and dissect, Vessel Sealer Extend helps you flow seamlessly from one action to the next.



Get two grip strengths in one grasper

Force Bipolar with DualGrip technology can help streamline setup and minimize workflow disruptions by reducing instrument exchanges.

System comparison

Da Vinci X



Da Vinci Xi



	Da Vinci X	Da Vinci Xi
Core technology		
Da Vinci OS4 compatible	✓	✓
Intuitive motion	✓	✓
EndoWrist technology	✓	✓
Immersive 3DHD stereo viewer	✓	✓
Upgradeable architecture	✓	✓
Technology enhancements¹		
Dual console compatible	✓	✓
Single-Site technology	✓	✓
Vessel Sealer Extend	✓	✓
Firefly Fluorescence Imaging	✓	✓
Multi-Port instruments and endoscope	✓	✓
Integrated energy	✓	✓
Da Vinci stapling portfolio	✓	✓
Platform modularity	✓	✓
Handheld camera	✓	✓
Endoscope Plus	✓	✓
Capability enhancements¹		
Streamlined port placement	✓	✓
Extended anatomical access	×	✓
Integrated Table Motion	×	✓
Boom rotation	×	✓
Ease of use enhancements¹		
Automated setup tasks	×	✓
Advanced intraoperative adjustments	×	✓
Universal cart positioning	×	✓
Optimized patient side access	×	✓

Purchasing information

Da Vinci Xi system

To contact a representative or receive additional information visit:
www.intuitive.com

or

call Intuitive Customer Service in Europe at:

+41.21.821.2020 or
+800.0821.2020 (toll free)



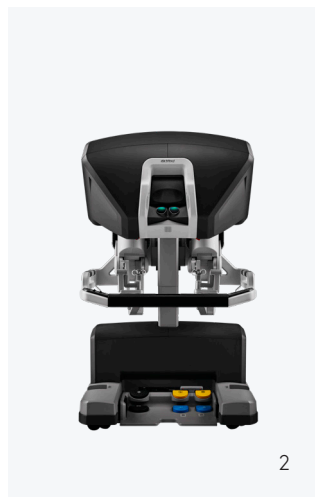
What you get

The da Vinci Xi system has three main components as standard:

1. A unique **patient cart**

2. A **surgeon console** providing an immersive, ergonomic experience

3. A **vision cart** supporting the latest 3DHD vision system



Important safety information

Serious complications may occur in any surgery, including da Vinci Surgery, up to and including death. Examples of serious or life-threatening complications, which may require prolonged and/or unexpected hospitalization and/or reoperation, include but are not limited to, one or more of the following: injury to tissues/organs, bleeding, infection and internal scarring that can cause long-lasting dysfunction/pain.

Risks specific to minimally invasive surgery, including da Vinci surgery, include but are not limited to, one or more of the following: temporary pain/nerve injury associated with positioning; a longer operative time, the need to convert to an open approach, or the need for additional or larger incision sites. Converting the procedure could result in a longer operative time, a longer time under anesthesia, and could lead to increased complications. Contraindications applicable to the use of conventional endoscopic instruments also apply to the use of all da Vinci instruments.

For Important Safety Information, indications for use, risks, full cautions and warnings, please also refer to www.intuitive.com/safety.

Individuals' outcomes may depend on a number of factors, including but not limited to patient characteristics, disease characteristics and/or surgeon experience.

Da Vinci Surgical Systems

The Intuitive Surgical Endoscopic Instrument Control Systems (da Vinci X, da Vinci Xi and da Vinci Si surgical systems) are intended to assist in the accurate control of Intuitive Surgical Endoscopic Instruments during urologic surgical procedures, general laparoscopic surgical procedures, gynecologic laparoscopic surgical procedures, general thoracoscopic surgical procedures, thoracoscopically-assisted cardiomy procedures, and trans-oral otolaryngology surgical procedures restricted to benign tumors and malignant tumors classified as T1 and T2, and for benign base of tongue resection procedures. The systems can also be employed with adjunctive mediastinotomy to perform coronary anastomosis during cardiac revascularization. The systems are indicated for adult and pediatric use (except for trans-oral otolaryngology surgical procedures). They are intended to be used by trained physicians in an operating room environment.

The da Vinci X, da Vinci Xi and da Vinci Si surgical systems are class IIb medical devices CE marked

(CE0543) under the European Medical Devices Directive (93/42/EEC), manufactured by Intuitive Surgical, Inc. Refer to Instructions For Use before use.

Firefly Fluorescence Imaging

The da Vinci Firefly imaging system is intended to provide real-time endoscopic visible and near-infrared fluorescence imaging. The da Vinci Firefly imaging system enables surgeons to perform minimally invasive surgery using standard endoscopic visible light as well as visual assessment of vessels, blood flow and related tissue perfusion, and at least one of the major extra-hepatic bile ducts (cystic duct, common bile duct or common hepatic duct), using near infrared imaging.

Table motion

The da Vinci table motion is intended to allow the surgical staff to reposition the patient by adjusting the table without undocking the da Vinci Xi surgical system during urologic surgical procedures, general laparoscopic surgical procedures, and gynecologic surgical procedures. It is designed to be used with a compatible operating room (OR) table.

Stapler family

The EndoWrist Stapler 45 and Stapler 30 instruments, Stapler 45 and Stapler 30 reloads and other stapler accessories are intended to be used with the da Vinci X and da Vinci Xi surgical systems for resection, transection and/or creation of anastomoses in general, thoracic, gynecologic and urologic surgery. The devices can be used with staple line or tissue buttressing material (natural or synthetic).

The EndoWrist Stapler 45 and Stapler 30 instruments, Stapler 45 and Stapler 30 reloads and other stapler accessories are class Is, IIa and IIb medical devices CE marked (CE0543) under the European Medical Devices Directive (93/42/EEC), manufactured by Intuitive Surgical, Inc. Refer to Instructions For Use before use.

SureForm staplers

The SureForm 60 and SureForm 45, SureForm 60 and SureForm 45 reloads are intended to be used with a compatible da Vinci surgical system for resection, transection, and, or creation of anastomoses in general, thoracic, gynecologic, urologic, and pediatric surgery. The devices can be used with staple line or tissue buttressing material (natural or synthetic).

The SureForm 60 and SureForm 45, SureForm 60 and SureForm 45 reloads are class IIa and IIb medical devices CE marked (CE0543) under the European

Medical Devices Directive (93/42/EEC), manufactured by Intuitive Surgical, Inc. Refer to Instructions For Use before use.

Force bipolar

The EndoWrist Force Bipolar is intended to be used with compatible systems for endoscopic manipulation of tissue, including dissection, grasping, retraction, and bipolar coagulation of tissue.

The EndoWrist Force Bipolar is a class IIb medical device CE marked (CE0543) under the European Medical Devices Directive (93/42/EEC) manufactured by Intuitive Surgical, Inc. Refer to Instructions For Use before use.

Single-Site

The Single-Site instruments and accessories are intended for use with the da Vinci X and da Vinci Xi surgical systems to enable multiple instruments in conjunction with the Single-Site Port accessory for use in single incision laparoscopic abdominal surgery.

The Single-Site instruments and accessories are class IIa and IIb medical devices CE0543 marked under the European Medical Device Directive (93/42/EEC), and manufactured by Intuitive Surgical, Inc. Refer to Instructions For Use before use.

Vessel Sealer Extend

The Vessel Sealer Extend is a bipolar electro-surgical sealing and cutting instruments for use with the da Vinci Xi and da Vinci X surgical systems and the

ERBE VIO dV electro-surgical generator. It is intended for grasping and blunt dissection of tissue and for bipolar coagulation and mechanical transection of vessels up to 7 mm in diameter and tissue bundles that fit in the jaws of the instrument. The Vessel Sealer Extend has not been shown to be effective for tubal sterilization or tubal coagulation for sterilization procedures, and should not be used for these procedures.

The Vessel Sealer Extend is class IIb medical devices CE marked (CE0543) under the European Medical Devices Directive (93/42/EEC), manufactured by Intuitive Surgical, Inc. Refer to Instructions For Use before use.

ERBE VIO dV

The ERBE VIO dV with accessories electro-surgical unit is intended to deliver High Frequency (HF) current for the cutting and/or coagulation of tissue.

The ERBE VIO dV is a class IIb medical device CE marked (CE 0124) under the European Medical Devices Directive (93/42/EEC) manufactured by ERBE Elektromedizin GmbH. Refer to Instructions For Use before use.

Unless otherwise noted, all people depicted are models.

References

1. Compared to the da Vinci Si surgical system. Results of testing on file.

PN1064693-EU RevB 05/2020

European regional offices

European headquarters (Switzerland)

Intuitive Surgical Sàrl
1, chemin des Mûriers
1170 Aubonne, Suisse
Tel: +41 21 821 2000
Fax: +41 21 821 2001
VAT #: CHE-113.407.162 VAT

Germany

Intuitive Surgical Deutschland GmbH
Am Flughafen 6
79108 Freiburg, DE
MWST #: DE200038727
Amtsgericht Freiburg, HRB 720585
Geschäftsführer: Dirk Barten,
Marshall Mohr, Jean-Yves Raimon-
Dacunha-Castelle, Kara Andersen Reiter

France

Intuitive Surgical SAS
Cité de la Photonique, bâtiment Gienah
11 avenue de Canteranne
33600 Pessac, FR
TVA #: FR 64 417 889 177
SIREN 417 889 177
Capital Social 37000€
RCS Bordeaux Code APE 4646Z

United Kingdom

Intuitive Surgical Ltd
The Schrodinger Building
Oxford Science Park
Heatley Rd, Oxford, OX4 4GE, UK
VAT #: GB943 2213 49
Company registration
No 6727762

Global headquarters

USA

Intuitive Surgical, Inc.
1020 Kifer Road, Building 108
Sunnyvale, CA 94086-5304
Tel: +1.408.523.2100

INTUITIVE

